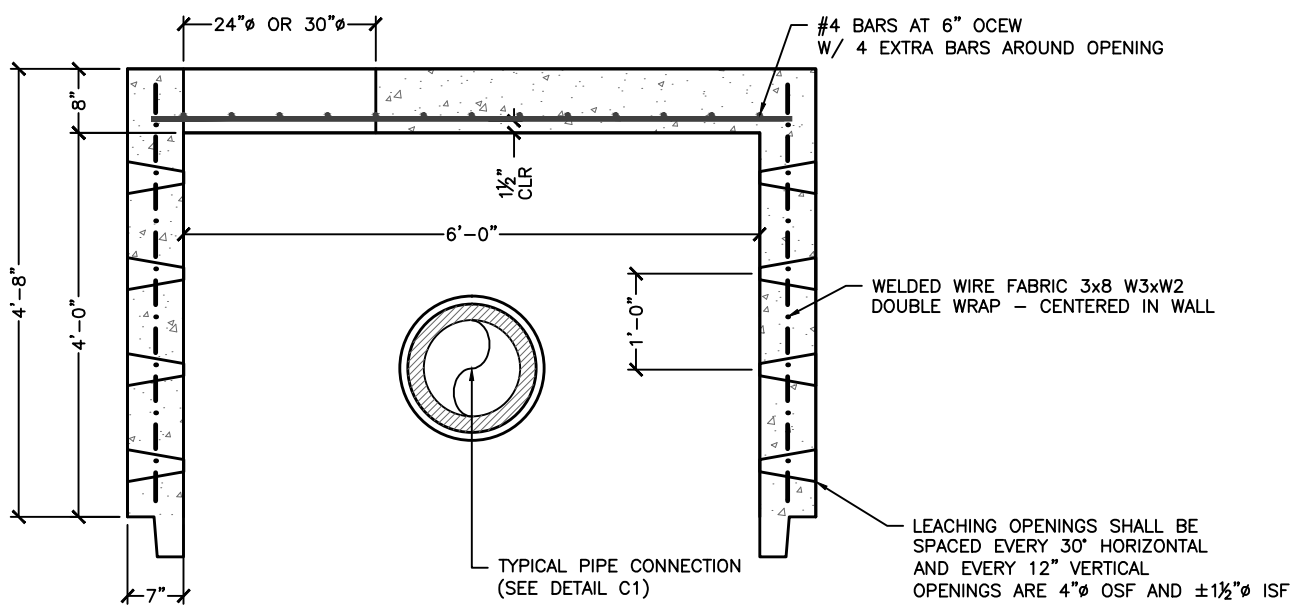



NOTE:  
TOP SLAB REINFORCED TO MEET OR EXCEED REQUIREMENTS OF AASHTO HS20-44 LOADING.



- NOTES:
1. MANUFACTURED TO MEET OR EXCEED REQUIREMENTS OF ASTM C-478 & AASHTO M-199 SPECIFICATIONS.
  2. CIRCUMFERENTIAL REINFORCEMENT SHALL CONFORM TO ASTM A-185. TOP STEEL SHALL CONFORM TO ASTM A-615 GRADE 60 DEFORMED BARS. BOTH PLACED PER ASTM C-478 (8.1, 8.3, 8.4).
  3. CONCRETE: 4,000 PSI MINIMUM @ 28 DAYS, PER ASTM C-478 (6.1). CEMENT TO BE PER ASTM C-150.

Revised: 7/21/14

DWG NO. <b>S1</b>	<b>Customer:</b>  	<b>Project Name:</b> <b>Project Location:</b>  6' DIAMETER <b>COMMERCIAL DRY WELL</b>	 173 BUXTON INDUSTRIAL DRIVE-PO BOX 870 HENNIKER, NH 03242 PHONE: 603-428-3218 FAX: 603-428-7426 www.michiecorp.com
	Project No:	Scale: AS SHOWN	
Date:	Designed by:	Drawn by: P.L.	Checked by: XXX

S:\VAD\LEAVEY\CAT\ADJEN\WORKING\STRUCTURE\DWG\INDEX\ROUND\STRUCTURE\DWG\7/27/2014 8:55 AM